

**Sipna Shikshan Prasarak Mandal, Amravati's**  
**ARTS, SCIENCE AND COMMERCE COLLEGE**

**CHIKHALDARA, DISTT. AMRAVATI (Maharashtra State)**



## **CRITERION – VII**

### **7.1 Institutional Values and Social Responsibilities**

#### **7.1.2**

The Institution has facilities and initiatives for

1. Alternate sources of energy and energy conservation measures
2. Management of the various types of degradable and nondegradable waste
3. Water conservation
4. Green campus initiatives
5. Disabled-friendly, barrier free environment

■ President  
**Shri. Jagdish M. Gupta**  
(Ex. Minister of State, Maharashtra)  
0721 (O)2522341 (R) 2572526



SIPNA SHIKSHAN PRASARAK MANDAL'S AMRAVATI

**ARTS, SCIENCE &**

**COMMERCE COLLEGE, CHIKHALDARA**

■ Principal  
**Dr. Rajesh S. Jaipurkar**  
(Mob.) 9423126066

Distt. Amravati (Maharashtra) 444 807  
NAAC Reaccredited 3rd Cycle with CGPA 2.77 at grade B++ (2018-2023)

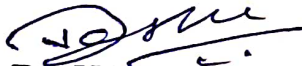
■ E-mail : [ascc163@sgbau.ac.in](mailto:ascc163@sgbau.ac.in) ■ Website : [www.sipnaascc.ac.in](http://www.sipnaascc.ac.in) ■ Tel. (O) 07220-230309

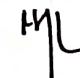
Outward No : *ASCC/Cert./248/2023*

Date : *23/05/2023*

## DECLARATION

This is to declare that the information, photos, reports, true copies, numerical data, etc. furnished in this file as supporting documents is verified by IQAC and found correct.

  
Dr. V.D. Kapse  
IQAC Coordinator  
Co-ordinator  
**IQAC**  
Arts, Science & Commerce College,  
Chikhaldara  
Distt.: Amravati (M. S.)

  
Dr. R.S. Jaipurkar  
Principal  
**PRINCIPAL**  
Art, Science & Commerce  
College, Chikhaldara



**Sipna Shikshan Prasarak Mandal, Amravati's**  
**ARTS, SCIENCE AND COMMERCE, COLLEGE**  
**CHIKHALDARA, DISTT. AMRAVATI (Maharashtra State)**



**SUPPORTING DOCUMENTS**

**Sipna Shikshan Prasarak Mandal, Amravati's**

**ARTS, SCIENCE AND COMMERCE COLLEGE**

**CHIKHALDARA, DISTT. AMRAVATI (Maharashtra State)**

**Metric No. 7.1.2**

**-I N D E X-**

**Geo-tagged Photograph / Videos of the Facilities**

<b>Sr. No</b>	<b>Name of Document</b>	<b>Page No.</b>
<b>1</b>	<b>Geo Tagged Photos of Use of LED Bulbs</b>	<b>5</b>
<b>2</b>	<b>Geo Tagged Photos of Liquid Waste Management</b>	<b>6</b>
<b>3</b>	<b>Geo Tagged Photos of Water Tank (Roof Water Harvesting)</b>	<b>7-8</b>
<b>4</b>	<b>Geo Tagged Photos of Drinking Water Tank (College)</b>	<b>9</b>
<b>5</b>	<b>Geo Tagged Photos of Water Tank (Women's Hostel)</b>	<b>10</b>
<b>6</b>	<b>Geo Tagged Photos of Automobile Restriction</b>	<b>11</b>
<b>7</b>	<b>Geo Tagged Photos of CCTV Cameras</b>	<b>12</b>
<b>8</b>	<b>Geo Tagged Photographs of Other Facilities Like Ramp, Wheel Chair, Etc.</b>	<b>13-17</b>

**Sipna Shikshan Prasarak Mandal Amravati's  
Arts , Science and Commerce College,Chikhaldara Distt. Amravati**  
**Environmental Consciousness and Sustainability**

*The Institution has facilities for alternate sources of energy and energy conservation measures*



**Use of Led Bulbs in Library**



**Use of led Bulbs in Office**

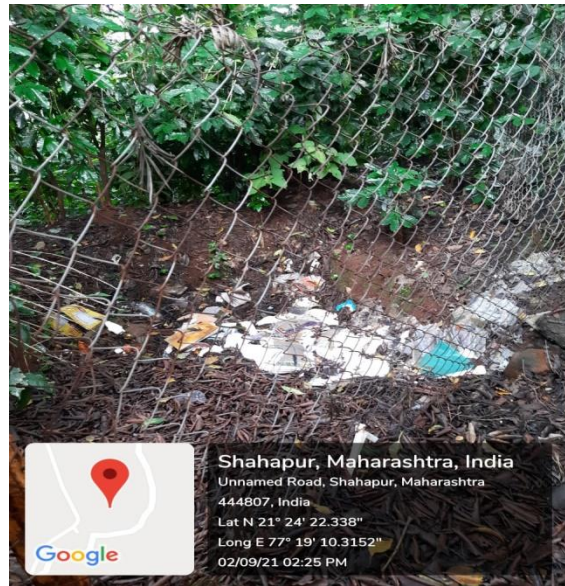


**Use of Led Bulbs in Principal Office**



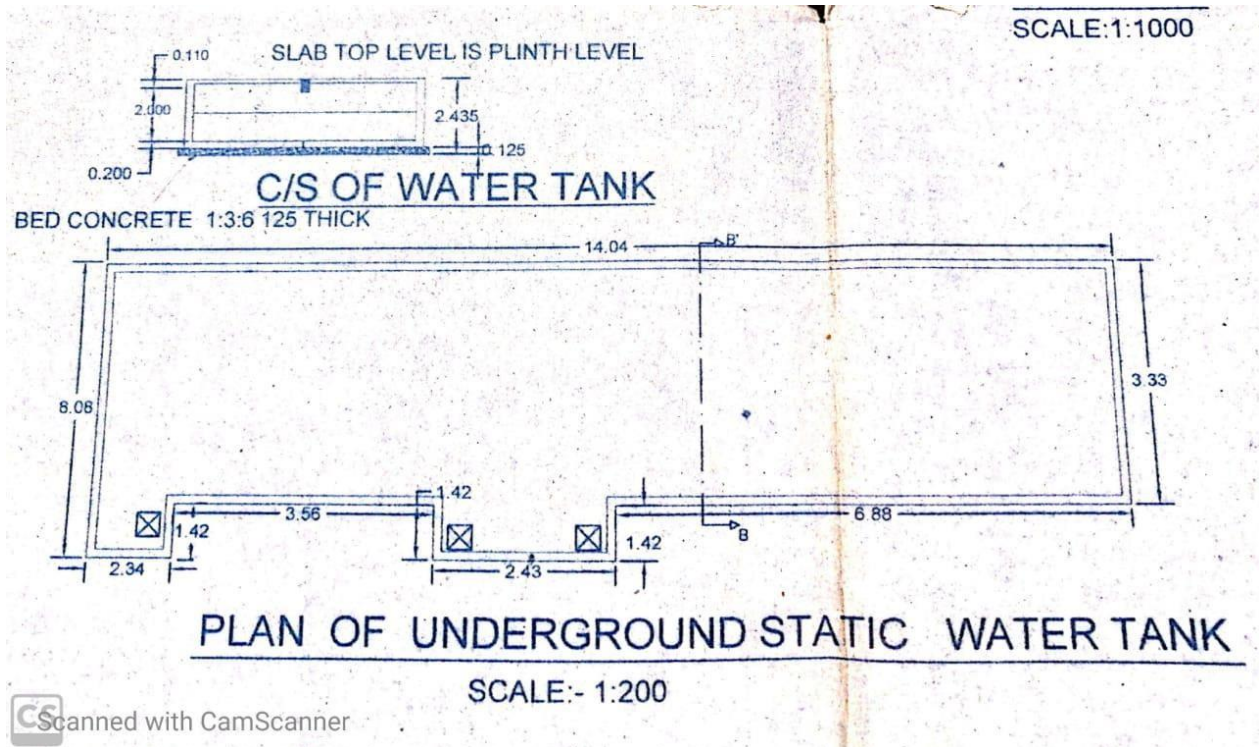
**Use of Led Bulbs in Teaching Room/ Department**

**Sipna Shikshan Prasarak Mandal Amravati's  
Arts , Science and Commerce College, Chikhaldara Distt. Amravati  
Environmental Consciousness and Sustainability – liquied waste management**



**Disposed of in captive or common treatment, storage and disposed facilities available in the campus**

Sipna Shikshan Prasark Mandal Amravati's  
 Arts, Science and Commerce College, Chikhaldara Dist. Amravati  
 Environmental Consciousness and Sustainability -Rain Water Harvesting



Map of the Tank of Rain water harvesting at college campus –Girls Hostel Building



Water conservation facility available at college campus –Girls Hostel Building



Water conservation and distribution facilities available at college campus – Girls Hostel Building



**Sipna Shikshan Prasark Mandal Amravati's  
Arts, Science and Commerce College, Chikhaldara Distt. Amravati**

**Water Tank**



**Water Tank for Drinking water at College Campus**

**Sipna Shikshan Prasark Mandal Amravati's  
Arts, Science and Commerce College, Chikhaldara Distt. Amravati**

**Water Tank**



**Water Tank for water supply at Women's Hostel at Aladoh Campus**



**Water Tank for Garden at Aladoh Campus**

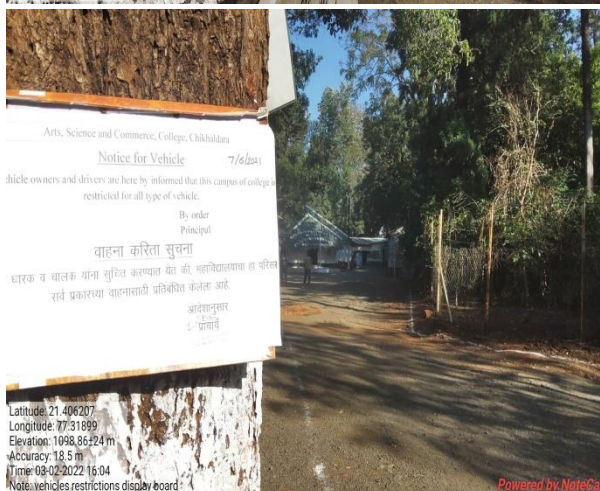
Sipna Shikshan Prasark Mandal Amravati's  
Arts, Science and Commerce College Chikhaldara Distt. Amravati

**Green campus initiatives include**

The institutional initiatives for greening the campus are as follows:

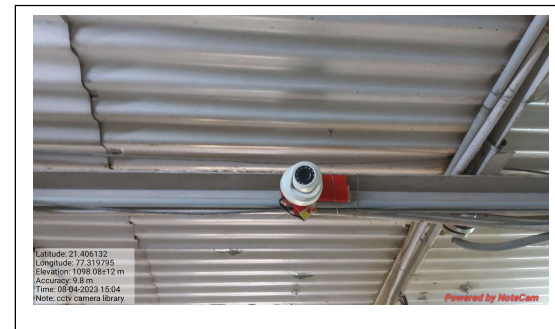
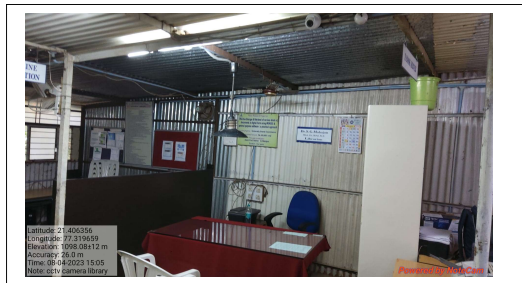


**Restricted entry of automobiles**



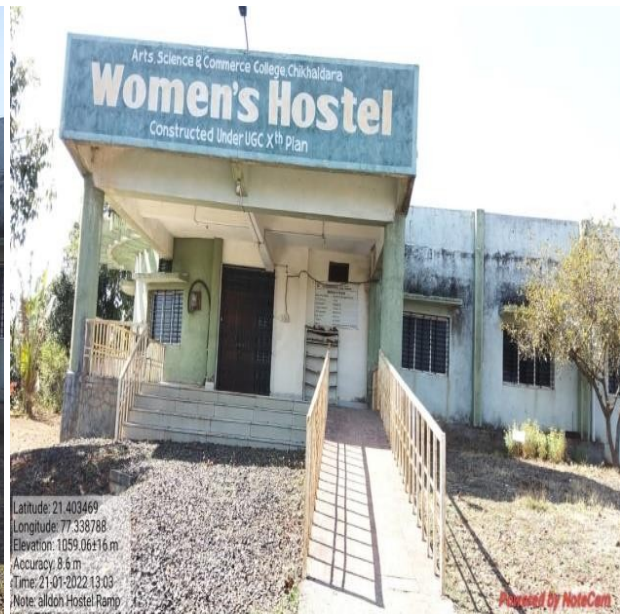
**Restricted entry of automobiles**

Sipna Shikshan Prasarak Mandal Amravatis  
 Arts Science and Commerce College , Chikhaldara  
**CCTV Camera in College Campus**



**Sipna Shikshan Prasark Mandal Amravati's  
Arts , Science and Commerce College,Chikhaldara Distt. Amravati  
Academic Year : 2021-22**

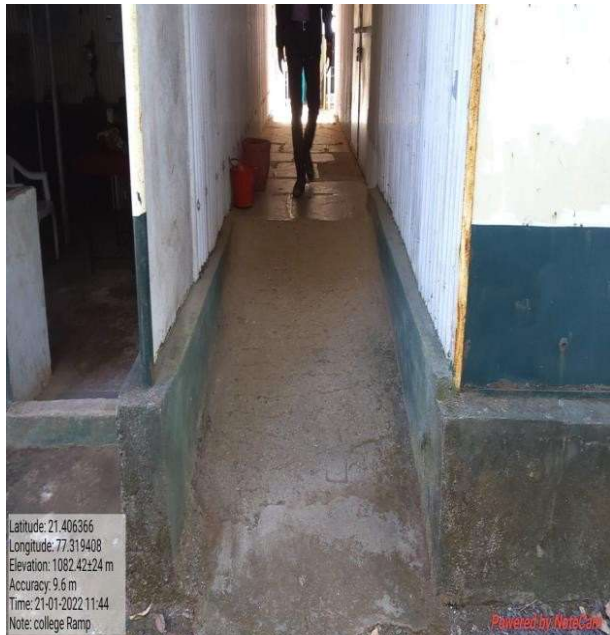
*The Institution has disabled-friendly, barrier free environment*



**Ramp at Women's Hostel campus**

**Sipna Education Society Amravti's  
Arts , Science and Commerce College,Chikhaldara Distt. Amravati**

*The Institution has disabled-friendly, barrier free environment*



**Arts, science and commerce college, Chikhaldara- Ramp at College campus**

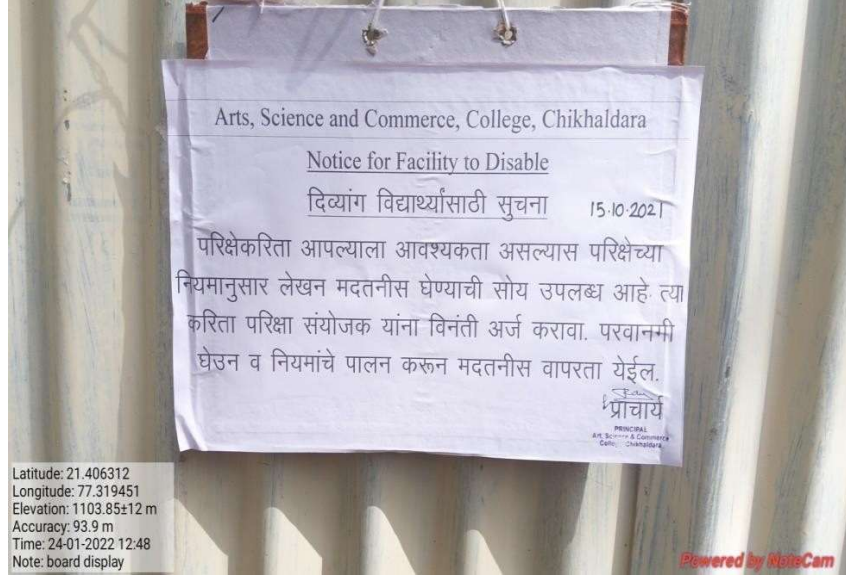
# Sipna Shikshan Prasark Mandal Amravati's

## Arts , Science and Commerce College,Chikhaldara Distt. Amravati

*The Institution has disabled-friendly, barrier free environment - Disabled-friendly washrooms*



**Sipna Shikshan Prasark Mandal Amravati's**  
**Arts , Science and Commerce College,Chikhaldara Distt. Amravati**  
*The Institution has disabled-friendly, barrier free environment*



Assistive technology and facilities for persons with disabilities  
( *Divyangjan*) accessible website, screen-reading software, mechanized equipment



## Wheel Chair

