



**Sipna Shikshan Prasarak Mandal, Amravati's**  
**ARTS, SCIENCE AND COMMERCE COLLEGE**  
**CHIKHALDARA, DISTT. AMRAVATI (Maharashtra State)**  
**Accredited by NAAC with Grade B++ (CGPA 2.77)**



## **DVV Clarification For**

### **7.1.2 The Institution has facilities and initiatives**

■ President  
**Shri. Jagdish M. Gupta**  
(Ex. Minister of State, Maharashtra)  
0721 (O)2522341 (R) 2572526



SIPNA SHIKSHAN PRASARAK MANDAL'S AMRAVATI  
**ARTS, SCIENCE &  
COMMERCE COLLEGE, CHIKHALDARA**

■ Principal  
**Dr. Rajesh S. Jaipurkar**  
(Mob.) 9423126066

Distt. Amravati (Maharashtra) 444 807  
NAAC Reaccredited 3rd Cycle with CGPA 2.77 at grade B++ (2018-2023)

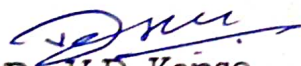
■ E-mail : [ascc163@sgbau.ac.in](mailto:ascc163@sgbau.ac.in) ■ Website : [www.sipnaascc.ac.in](http://www.sipnaascc.ac.in) ■ Tel. (O) 07220-230309

Outward No :

Date : 23/09/2023

## DECLARATION

This is to declare that the information, photos, reports, true copies, numerical data, etc. furnished in this file as supporting documents for DVV clarification is verified by IQAC and found correct.

  
Dr. V.D. Kapse  
IQAC Coordinator  
Co-ordinator  
IQAC  
Arts, Science & Commerce College,  
Chikhaldara  
Distt.: Amravati (M.S.)



ML  
Dr. R. S. Jaipurkar  
Dr. R.S. Jaipurkar  
Principal  
Arts Science & Commerce College,  
Chikhaldara, Dist - Amravati



**Sipna Shikshan Prasarak Mandal, Amravati's**  
**ARTS, SCIENCE AND COMMERCE COLLEGE**  
**CHIKHALDARA, DISTT. AMRAVATI (Maharashtra State)**  
**Accredited by NAAC with Grade B++ (CGPA 2.77)**



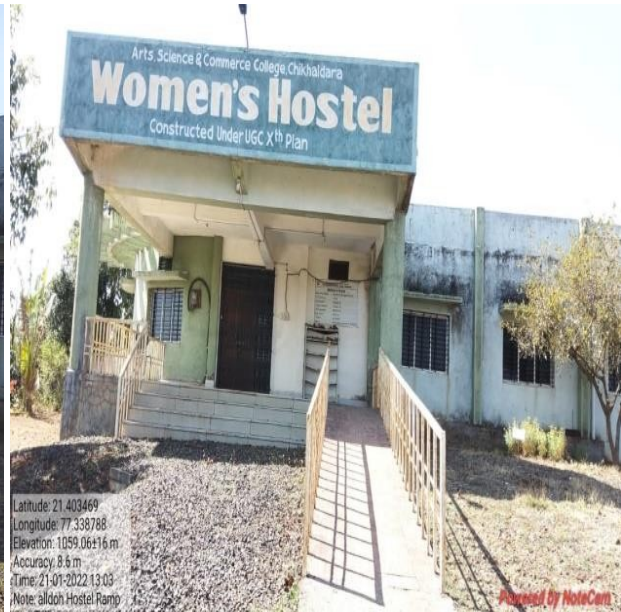
## I N D E X

**Photographs of Ramps/ rails/lift/wheel Chair/signage board/Toilet/ software etc.**

<b>Sr. No</b>	<b>Name of Document</b>	<b>Page No.</b>
<b>1</b>	<b>Photographs of Ramps/ rails/lift/wheel Chair/signage board/Toilet/ software etc.</b>	<b>4-8</b>

**Sipna Shikshan Prasark Mandal Amravati's  
Arts , Science and Commerce College,Chikhaldara Distt. Amravati  
Academic Year : 2021-22**

*The Institution has disabled-friendly, barrier free environment*

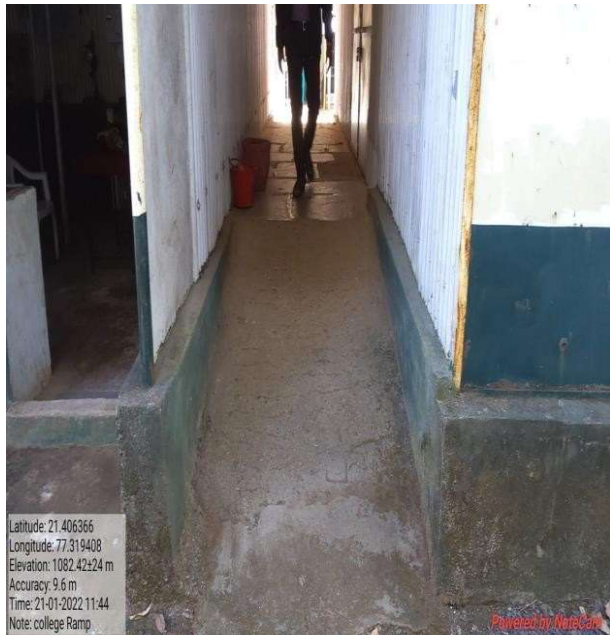


**Ramp at Women's Hostel campus**



**Sipna Education Society Amravti's  
Arts , Science and Commerce College,Chikhaldara Distt. Amravati**

*The Institution has disabled-friendly, barrier free environment*



**Arts, science and commerce college, Chikhaldara- Ramp at College campus**

# Sipna Shikshan Prasark Mandal Amravati's

## Arts , Science and Commerce College,Chikhaldara Distt. Amravati

*The Institution has disabled-friendly, barrier free environment - Disabled-friendly washrooms*



**Sipna Shikshan Prasark Mandal Amravati's**  
**Arts , Science and Commerce College,Chikhaldara Distt. Amravati**  
*The Institution has disabled-friendly, barrier free environment*



Latitude: 21.406312  
Longitude: 77.319451  
Elevation: 1103.85±12 m  
Accuracy: 93.9 m  
Time: 24-01-2022 12:48  
Note: board display

Assistive technology and facilities for persons with disabilities  
( *Divyangjan*) accessible website, screen-reading software, mechanized equipment



## Wheel Chair

