

Web Portal and its use in Library: a application of WINISIS**Dr. Sachin G. Mahajan**

(Librarian)

Arts, Science & Commerce College, Chikhaldara, Dist. Amravati (MS)

Abstract:

Online search for required information is one of the useful tools, but search engines like google provides lacks of relevant documents with low precision ratio. A separate mechanism that can provide access to selected and specific websites is more useful today. Author of this article has tried to develop Web Portal with the help of WINISIS which provides access to required selected and specific websites. Complete procedure and steps were provided for the development of Web Portal, the same can be used and implemented by readers of this article.

Keywords : Winisis, Web Portal, Online Search, Library Automation,

Today libraries are facing the problems of funds and manpower and besides have to walk with the present scenario of IT based library services. Because of information explosion, libraries have been growing in size as well as complexity in terms of library management and library services. With this, libraries also require flexibility in library software as per local needs and requirements. Accordingly, libraries require a high degree of efficiency, which can be possible by automation of Library services.

In various library services, online search for required information is one of the useful tools, but search engines like Google provides lacks of relevant documents with low precision ratio. A separate mechanism that can provide access to selected and specific websites is more useful today.

Author of this article has tried to develop Web Portal with the help of WINISIS which provides access to required selected and specific websites. Complete procedure and steps were provided for the development of Web Portal, the same can be used and implemented by readers of this article.

WINISIS:

CDS/ISIS for Windows is an information retrieval package developed by UNESCO (the United Nations Educational, Scientific and Cultural Organization) which runs under Microsoft Windows. Version 1.4 was circulated on CD-ROM to distributors in March 2001 and is dated January 2001.

The major differentiating feature of CDS/ISIS when compared with other database management systems is in its use of variable length text fields. Data in database management systems is entered into fields. In many database management packages such as dBase or Microsoft Access, the fields are of fixed length. With this, there are various differentiating features when compared with other database management systems.

Features of WINISIS:

CDS/ISIS is a generalized Information Storage and Retrieval system. It is intended to be used for structured non-numerical databases containing mainly texts.

- It is specialized in handling variable-length information.
- It may manage stand-alone as well as local network database systems.
- Unlike Dbase or MS-Access, CDS/ISIS is not a relational database system, although it provides some relational facilities.
- CDS/ISIS may be expanded by advanced users (programmers) for adding new services and tools.
- A wide variety of solutions for Internet publishing of data are already available. (UNESCO 2004)
- For the design of web portal special database is designed using four main components of WINISIS i.e.

Field Definition Table, Data Entry Worksheet, Print Format and Field Select Table.

1. Field Definition Table: It provides details about the various fields defined to create the databases.
2. Data Entry Worksheet: It shows the structure of data to be entered in the worksheet.
3. Print Format: It is also called as display format. It is used to display the contents of database in various formats.
4. Field Selection Table: It is used to define the searchable fields and to create the term dictionary of useful or retrievable keywords

Web Portal:

Access to proper website helps to get essential information in a short period. Most of the users search their required websites through search engines on related words. However, search engine provides thousands of websites, which confuses the users.

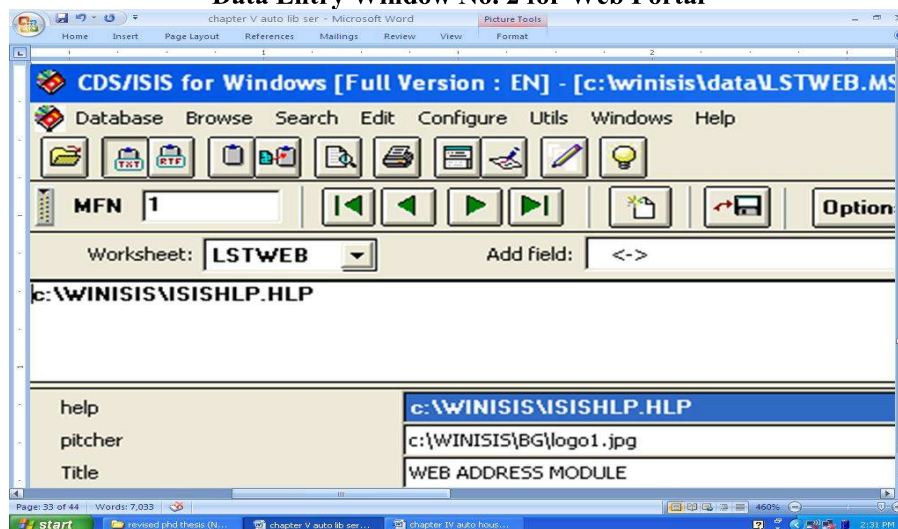
Mechanism to provide access or address of selected websites can save the time, efforts and cost of users. Looking towards this need researcher has developed the web portal providing access and address of the required websites for each faculty or subject. It also includes address and access points of the frequently used websites or general websites as shown in the windows.

Field definition table 1, data entry window 2 and the print format no. 3 helps to design the database window 4 for the web portal as given. It provides faculty wise access to the various websites or sometimes separately as shown in the database window 5.

Field Definition Table No. 1 for Web Portal.

| Sr. No. | Tag Number | Field Name | Field Type | Repeatable or Not | Pattern/ Subfields |
|---------|------------|------------|--------------|-------------------|--------------------|
| 1 | 2 | Help | Alphanumeric | - | Abc |
| 2 | 5 | Pitcher | Alphanumeric | - | Abc |
| 3 | 10 | Title | Alphanumeric | - | Abc |
| 4 | 20 | Sub Title | Alphanumeric | - | Abc |

Data Entry Window No. 2 for Web Portal



Print Format No. 3 for Web Portal

```
fs20,link(('Help'),'OPENFILE ',v2)/
qc,cl6,fs40,{b,v10}/#
bpict('logo1.jpg',4)/v5^a
fs30, link(('Click for Online Library Resources'),'BROWSE onlibr')/#
link (('Click for Online News Papers'),'BROWSE onlinp')/#
link (('Click for General Websites'),'BROWSE genweb')/#
link(('Click for Websites Related to Arts'),'BROWSE arts')/#
link(('Click for Websites Related to Science'),'BROWSE scince')/#
link(('Click for Websites Related to Social Science'),'BROWSE socsci')/#
link(('Click for Websites Related to Commerce'),'BROWSE comrc')/###
link(('Back to Library Service Module'),'BROWSE libser')/#
link(('Back to Main Menu'),'BROWSE main')/#####
qc,fs20,'Design & Developed by Sachin G. Mahajan/'
```

Database Window No. 4 for Web Portal

Database window no. 4 works as access points of web portal. The portal shows access point for Online Library Resources, Online News Papers, Frequently Used General Websites, and Websites related to Arts, Science, Commerce, and so on.

The each link shows above further provides access to specific links shows in the window 5 for the portal. For instance if a user clicks on the Online Library Resources then the next window no. 5 as shows below will appear. It clearly shows the websites accessible thorough the portal. The users have to click on the red link provided in front of the website; it will jump on the related website automatically. The portal shows the websites like N-List, E-journals, Directory of Online Journals, Free Journals, Live Journals, and so on.

Database Window No. 5 for Web Portal

The above window shows the access points for the required specific and precise websites. We can modify and update the web links as and when needed as per our local requirements. The portal designed in such a way can reduce irrelevancy in the online search.

Conclusions:

1. Anyone can develop his web portal as per local needs using WINISIS by following the above steps.
2. The portal developed with the help of WINISIS is useful to access the specific and precise websites.
3. The portal permits modification and updation as and when required.
4. The portal is useful to increase precision ratio in search, to save time and to improve overall quality of online information search.

References:

1. Encyclopedia of Library and Information Science 1975, Morcel Dekker Inc., New York, vol.14, pp.338.
2. Libsys Manuals of all the modules 2001, Libsys Corporation, New Delhi.
3. SOUL Information Brochure 2010, INFLIBNET, Ahmedabad, Accessed on 20th September 2010, <www.inflibnet.ac.in>.
4. UNESCO 2004, CDS/ISIS for Windows reference Manual (Version 1.5) : (This manual refers to Winisis 1.5 build 3), Information Society Division Sector of Communication and Information, UNESCO, New Zealand.